

Tower Mountain Gold Property

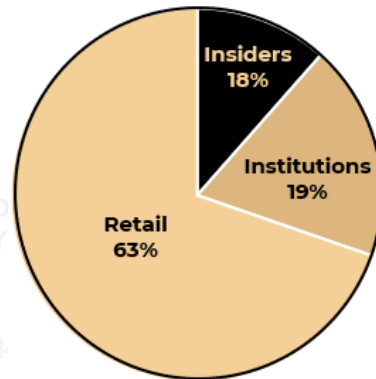
Tier One Discovery Opportunity in the Shebandowan Greenstone Belt



Board Management and Capital Structure

Dr. Elliot Strashin	Chairman of the Board
Mr. Wes Hanson	President, CEO & Director
Mr. David Speck	CFO
Dr. S. Jobin-Bevans	Director
Mr. Nigel Lees	Director
Mr. Warren Bates	Director

Shares Issued and Outstanding	147,000,750
Stock Options (\$0.10 - \$0.15)	10,705,000
Warrants (\$0.09 - \$0.20)	47,549,757
Fully Diluted Issued & Outstanding	205,255,507



TMX.V:TGOL

Treasury

C\$ 2.0 M

Location Access and Infrastructure



The Company's flagship asset is the Tower Mountain Property, located in the Shebandowan Greenstone Belt 45 km west of Thunder Bay, ON.

Tower Mountain offers year round highway access, excellent infrastructure and no significant environmental, permitting or social governance challenges.

The Company believes Tower Mountain offers Tier One discovery potential (> 5.0 M oz Au) as a large tonnage, low grade gold resource.

Property Overview

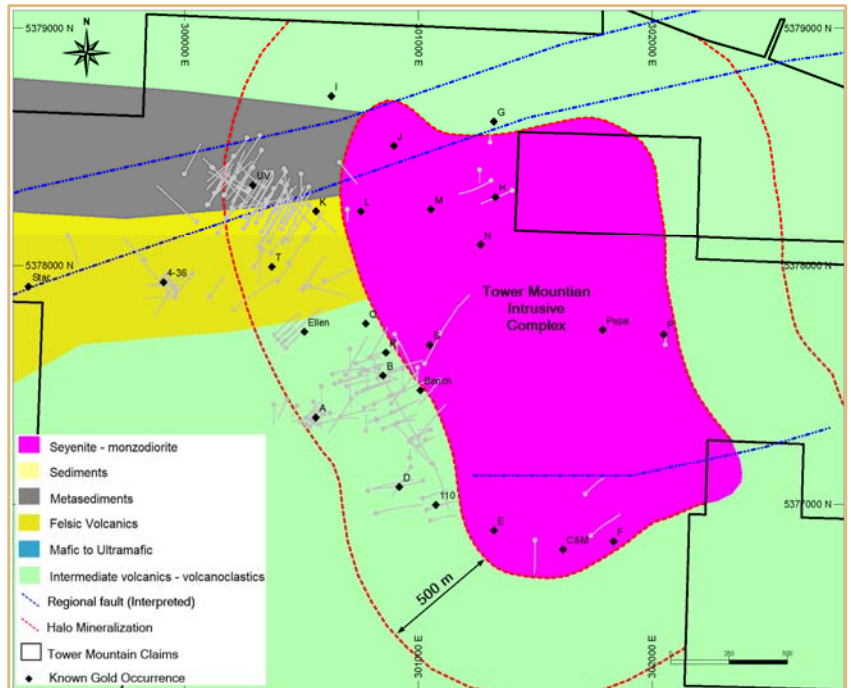
25 distinct targets, within a 7500 metre x 500 metre wide halo surrounding the Tower Mountain Intrusive Complex ("TMIC").

Drilling has defined widespread gold mineralization west of the TMIC measuring 1500 x 500 x 450 metres.

Approximately 6000 metres of the halo is undrilled.

Mineralization is consistent over several hundreds of metres of core length in multiple drill holes with few outlier values.

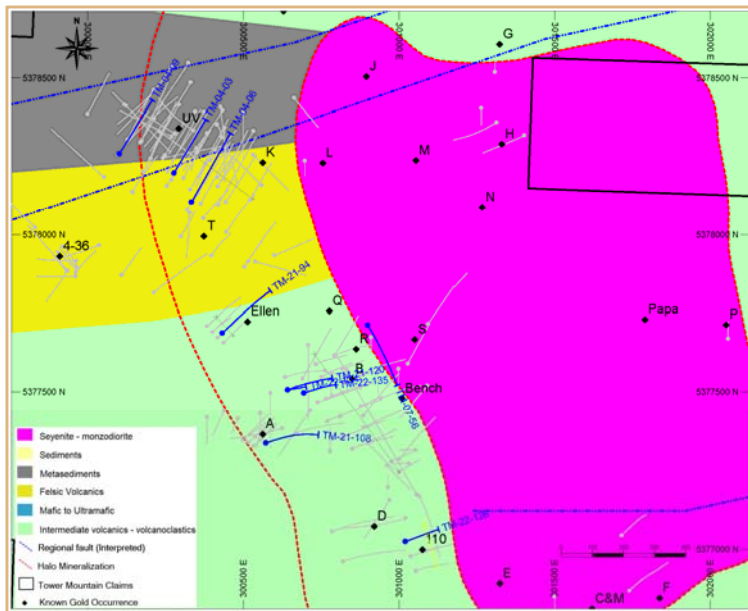
Gold interpreted to be contemporaneous with the TMIC which is largely undrilled.



Tower Mountain Gold Property

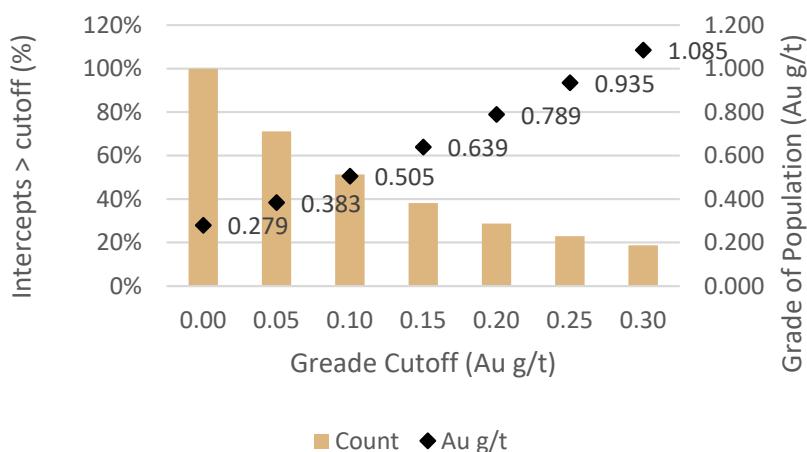
Tier One Discovery Opportunity in the Shebandowan Greenstone Belt

Western Halo – Typical Drill Results



Hole ID	From	To	Interval	Au g/t
TM-04-09	21.0	273.0	252.0	0.67
incl	169.50	250.50	81.00	1.89
TM-04-03	7.5	268.5	261.0	0.57
incl	31.50	123.00	91.50	1.20
TM-04-06	12.0	351.0	339.0	0.31
incl	115.5	159.0	43.5	1.55
TM-21-94	7.0	268.0	261.0	0.46
incl	10.0	86.5	76.5	1.28
TM-21-120	39.5	479.0	439.5	0.43
incl	182.0	441.5	259.5	0.61
TM-22-134	41.0	371.0	330.0	0.44
incl	182.0	371.0	189.0	0.54
TM-22-135	21.5	485.0	463.5	0.51
incl	128.0	387.5	259.5	0.72
TM-07-56	9.5	401.0	391.5	0.45
TM-21-108	3.7	389.0	385.4	0.38
incl	3.7	62.0	58.4	1.81
TM-22-126	2.0	182.0	180.0	0.40
incl	48.5	164.0	115.5	0.53

Database and Preliminary Statistics



The current database includes 173 diamond drill holes ~39,000 metres & 25,000 samples

At a cutoff grade of 0.20 g/t Au, the data averages 0.79 g/t Au & representing ~30% of the total population.

At a cutoff grade of 0.30 g/t Au, the data averages 1.09 g/t Au representing ~20% of the total population.

Preliminary Metallurgical Test Results (2022)

Standard bottle roll tests indicate that the mineralization is amenable to direct cyanidation with recoveries ranging from 72.5% to 94.9% and averaging 86.8%.

Standard bond ball work index testing indicates that the samples average ~20W (kWh/tonne).

Acid Base Accounting testing of leach tails indicate Net Neutralization Potential of 60.3 kg CaCO₃ equivalent per tonne, indicating the tailings are NOT potentially acid generating

